

Clayton/Sunnyside Elementary APRIL 2026

Breakfast Menu

Health-e Pro 

MON **TUE** **WED** **THU** **FRI**

Menus are available online at:
<http://www.smyrna.k12.de.us>

"The Smyrna School District is an equal opportunity employer and does not discriminate against employees, applicants, visitors, or others, and does not deny access to educational or other services, based on any characteristic prohibited by law." Federal Nondiscrimination Statement on reverse side.

1
Dutch Waffle
 100% Fruit Juice
 Whole Fresh Fruit
 Choice of Milk

2
Cinnamon Turnover
 100% Fruit Juice
 Whole Fresh/Asst.
 Dried Fruit
 Choice of Milk



9
BREAK

10

13 **Cheesy Scrambled Eggs w/ Graham Cracker**
 100% Fruit Juice
 Whole Fresh Fruit
 Choice of Milk

14 **Ultra Bread**
 100% Fruit Juice
 Whole Fresh/Asst.
 Dried Fruit
 Choice of Milk

15 **Assorted Muffins**
 100% Fruit Juice
 Whole Fresh Fruit
 Choice of Milk

16 **French Toast Sticks**
 100% Fruit Juice
 Whole Fresh/Asst.
 Dried Fruit
 Choice of Milk

17 **Professional Learning Day School Closed**



20 **Mini Pancakes**
 100% Fruit Juice
 Whole Fresh Fruit
 Choice of Milk

21 **Sunrise Stick**
 100% Fruit Juice
 Whole Fresh/ Asst.
 Dried Fruit
 Choice of Milk

22 **Donuts**
 100% Fruit Juice
 Whole Fresh Fruit
 Choice of Milk

23 **Apple Bites**
 100% Fruit Juice
 Whole Fresh/Asst.
 Dried Fruit
 Choice of Milk

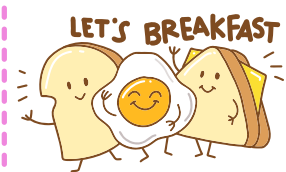
24 **Breakfast Sandwiches**
 100% Fruit Juice
 Whole Fresh Fruit
 Choice of Milk

27 **Breakfast Bun**
 100% Fruit Juice
 Whole Fresh Fruit
 Choice of Milk

28 **Piggiestick**
 100% Fruit Juice
 Whole Fresh/Asst.
 Dried Fruit
 Choice of Milk

29 **Cheesy Scrambled Eggs w/ Graham Cracker**
 100% Fruit Juice
 Whole Fresh Fruit
 Choice of Milk

30 **Pull-Apart Donut**
 100% Fruit Juice
 Whole Fresh/Asst.
 Dried Fruit
 Choice of Milk



ANNOUNCEMENTS

Daily

1 ounce Cereal w/ Graham Cracker
 1 pack Pop Tart w/ Graham Cracker

Monday and Friday
 Munchable cup

Wednesday
 Apple Nachos

Tuesday and Thursday
 Smoothie w/ Graham Cracker



MEAL PRICES

Student Breakfast: FREE
Student Extra Entrees: \$1.00
Adult Breakfast: \$3.50
Adult Breakfast Entrée Only: \$2.00

This institution is an equal opportunity provider



MENU SUBJECT TO CHANGE

K- 6th Grab & Go Breakfast Menu

April 2026

Health-e Pro 

MON	TUE	WED	THU	FRI
<p>Menus are available online at: http://www.smyrna.k12.de.us.</p> <p>"The Smyrna School District is an equal opportunity employer and does not discriminate against employees, applicants, visitors, or others, and does not deny access to educational or other services, based on any characteristic prohibited by law." Federal Nondiscrimination Statement on reverse side.</p>				
		<p>1 Trix Muffin 100% Fruit Juice Whole Fresh Fruit Choice of Milk</p>	<p>2 Mini Loaf 100% Fruit Juice Assorted Dried Fruit Choice of Milk</p>	<p>3 </p>
<p>6  7 8 9 10</p>				
<p>13 Poptart 100% Fruit Juice Whole Fresh Fruit Choice of Milk</p>	<p>14 Ultra Bread 100% Fruit Juice Assorted Dried Fruit Choice of Milk</p>	<p>15 Crumb cake 100% Fruit Juice Whole Fresh Fruit Choice of Milk</p>	<p>16 Cinnamon Toast Crunch French Toast 100% Fruit Juice Assorted Dried Fruit Choice of Milk</p>	<p>17 Professional Learning Day School Closed </p>
<p>20 Froot Loop Waffles 100% Fruit Juice Whole Fresh Fruit Choice of Milk</p>	<p>21 Poptart 100% Fruit Juice Assorted Dried Fruit Choice of Milk</p>	<p>22 Donut Holes 100% Fruit Juice Whole Fresh Fruit Choice of Milk</p>	<p>23 Assorted Muffins 100% Fruit Juice Assorted Dried Fruit Choice of Milk</p>	<p>24 Mini Cinnis 100% Fruit Juice Whole Fresh Fruit Choice of Milk</p>
<p>27 Poptart 100% Fruit Juice Whole Fresh Fruit Choice of Milk</p>	<p>28 Apple Bites 100% Fruit Juice Assorted Dried Fruit Choice of Milk</p>	<p>29 Trix Muffin 100% Fruit Juice Whole Fresh Fruit Choice of Milk</p>	<p>30 Mini Loaf 100% Fruit Juice Assorted Dried Fruit Choice of Milk</p>	<p></p>

ANNOUNCEMENTS

Grab & Go Breakfast is available at:
Smyrna Elementary
North Smyrna Elementary
Clayton Intermediate
John Bassett Moore

MEAL PRICES

Student Breakfast: FREE
Student Extra Entrees: \$1.00
Adult Breakfast: \$3.50
Adult Breakfast Entrée Only: \$2.00
 This institution is an equal opportunity provider



MENU SUBJECT TO CHANGE

Kindergarten - 6th Grade APRIL 2026

Lunch Menu

Health-e Pro 

MON **TUE** **WED** **THU** **FRI**

Menus are available online at:
<http://www.smyrna.k12.de.us>.

"The Smyrna School District is an equal opportunity employer and does not discriminate against employees, applicants, visitors, or others, and does not deny access to educational or other services, based on any characteristic prohibited by law." Federal Nondiscrimination Statement on reverse side.

1 **Spicy or Plain Boneless Wings w/ Cornbread**
Seasoned Corn
Celery Sticks
Diced Pears

2 **Beef & Cheese Nachos**
Salsa Cup
Red Pepper Slices
Froot Jooce



6 **13** **Meatless Monday Cheesy Breadstick**
Crinkle Cut French Fries
Vegetable Juice
Frozen Fruit Cup

7 **14** **Soft Taco w/ Toppings**
Fiesta Corn
Seasoned Black Beans
Pineapple Cup

8 **15** **French Bread Pizza**
Seasoned Green Beans
Vegetable Soup
Sidekick

9 **16** **Mandarin Orange Chicken w/ Rice & Roll or Chicken & Vegetable Dumplings**
Orange Glazed Carrots
Seasoned Broccoli
Mandarin Orange Cup

10 **17** **Professional Learning Day School Closed**



20 **Chicken & Waffles**
Buffalo Cauliflower
Red Pepper Slices
Apple Slices

21 **Cheese Quesadilla or Fish Sticks w/ Dinner Roll**
Steamed Peas
Romaine Side Salad
Cinnamon Diced Pears

22 **Pizza Palooza Homemade Pizza**
Pizza Style Green Beans
Cucumber cup
Applesauce Cup

23 **Chicken Bites w/ Corn Muffin**
Texas Ranchero Beans
Sweet Potato Wedges
Frozen Fruit Cup

24 **Beefaroni w/ Garlic Knot or Beef Hotdog**
Maple Brown Sugar Carrots
Steamed Spinach
Mixed Fruit Cup

27 **Pizza Crunchers**
Marinara Sauce
Seasoned Broccoli
Diced Peaches

28 **Cheeseburger w/ Toppings OR Corn Dog**
Carroteenies w/ Dip
Spinach Side Salad
Hot Apple Slices

29 **Breakfast for Lunch Chicken Sausage w/ French Toast Sticks**
Zucchini and Squash
Crinkle Cut Fries
100% Fruit Juice

30 **Pizza Bagels**
Emoji Fries
BBQ Baked Beans
Diced Pears

WHOLE FRESH FRUIT OFFERED DAILY

ANNOUNCEMENTS

Daily:
PB&J Sandwich w/ Goldfish & Cheese Stick
Cheese Sandwich
Fruit Salad w/ Pretzel

Monday, Wednesday, Friday:
Chicken Caesar Salad w/ Pretzel
Eagle Lunchable

Tuesday and Thursday:
Turkey & Cheese Sandwich
Fruit Parfait w/ Granola & Goldfish

CHOICE OF FAT FREE FLAVORED, 1% WHITE & SKIM MILK DAILY

MEAL PRICES

Student Lunch: \$1.25
Student Extra Entrée: \$2.00
Various Snacks: \$1.25+
Adult Lunch: \$5.25
Adult Lunch Entrée Only: \$3.50

*This institution is an equal opportunity provider
Smyrna Elementary & North Smyrna Elementary are CEP schools. Students attending these schools are provided meals at no cost.*



MENU SUBJECT TO CHANGE

Middle School APRIL 2026

Breakfast Menu

Health-e Pro 

MON

TUE

WED

THU

FRI

Menus are available online at:

<http://www.smyrna.k12.de.us>.

"The Smyrna School District is an equal opportunity employer and does not discriminate against employees, applicants, visitors, or others, and does not deny access to educational or other services, based on any characteristic prohibited by law." Federal Nondiscrimination Statement on reverse side.

1

Trix Muffin

100% Fruit Juice
Whole Fresh Fruit
Choice of Milk

2

Mini Loaf

100% Fruit Juice
Assorted Dried Fruit
Choice of Milk

3



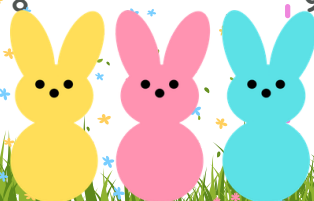
6



Spring

7

8



9

BREAK

10

13

Poptart

100% Fruit Juice
Whole Fresh Fruit
Choice of Milk

14

Ultra Bread

100% Fruit Juice
Assorted Dried Fruit
Choice of Milk

15

Chocolate Chip Muffin Top

100% Fruit Juice
Whole Fresh Fruit
Choice of Milk

16

Cinnamon Toast Crunch French Toast

100% Fruit Juice
Assorted Dried Fruit
Choice of Milk

17

Professional Learning Day
School Closed



20

Froot Loop Waffles

100% Fruit Juice
Whole Fresh Fruit
Choice of Milk

21

Sunrise Stick

100% Fruit Juice
Assorted Dried Fruit
Choice of Milk

22

Donut Holes

100% Fruit Juice
Whole Fresh Fruit
Choice of Milk

23

Assorted Muffins

100% Fruit Juice
Assorted Dried Fruit
Choice of Milk

24

Cinnamon Roll

100% Fruit Juice
Whole Fresh Fruit
Choice of Milk

27

Poptart

100% Fruit Juice
Whole Fresh Fruit
Choice of Milk

28

Apple Bites

100% Fruit Juice
Assorted Dried Fruit
Choice of Milk

29

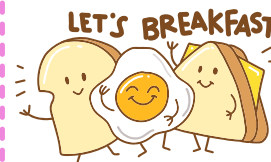
Trix Muffin

100% Fruit Juice
Whole Fresh Fruit
Choice of Milk

30

Mini Loaf

100% Fruit Juice
Assorted Dried Fruit
Choice of Milk



ANNOUNCEMENTS

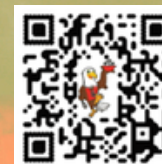
**Breakfast Meals are
Grab & Go!**

**Stop in the Cafeteria
to Start your day!**

MEAL PRICES

Student Breakfast: Free
Student Extra Entrée: \$1.00
Adult Breakfast: \$3.50
Adult Breakfast Entrée Only:
\$2.00

*This institution is an equal
opportunity provider*



**MENU
SUBJECT TO
CHANGE**

Middle School APRIL 2026

Lunch Menu

Health-e Pro 

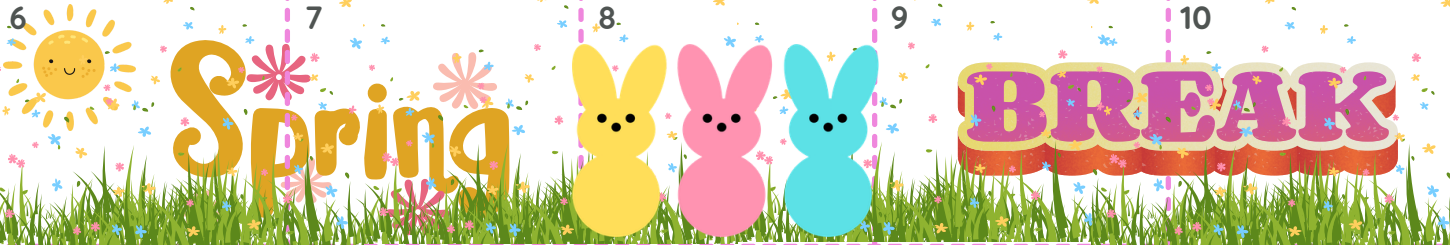
MON **TUE** **WED** **THU** **FRI**

Menus are available online at:
<http://www.smyrna.k12.de.us>.

"The Smyrna School District is an equal opportunity employer and does not discriminate against employees, applicants, visitors, or others, and does not deny access to educational or other services, based on any characteristic prohibited by law." Federal Nondiscrimination Statement on reverse side.

1 Spicy or Plain Boneless Wings w/ Mac & Cheese
Seasoned Corn
Celery Sticks
Sliced Pears

2 Beef & Cheese Nachos
Salsa Cup
Red Pepper Slices
Sidekick



13 Cheesesteak Melt
Crinkle Cut Fries
Vegetable Juice
Sliced Peaches

14 Soft Taco or Barbacoa Burrito Bowl
Cilantro Lime Rice
Seasoned Black Beans
Fiesta Corn
Pineapple cup

15 French Bread Pizza
Vegetable Soup
Seasoned Green beans
Sidekick

16 Mandarin Orange chicken w/ Rice & Dinner Roll or Chicken & Vegetable Dumplings w/ Rice & Dinner Roll
Steamed Broccoli
Orange Glazed Carrots
Mandarin Orange Cup

17 Professional Learning Day School Closed



20 Chicken Tenders w/ Breadstick
Pepperoni Pizza Bake
Steamed Peas
Applesauce cup

21 Fish Filet Sandwich or Cheese Quesadilla
Romaine Garden Salad
Seasoned Carrots
Sliced Pears

22 Pizza Palooza Homemade Pizza
Pizza Style Green Beans
Cucumber Cup
Apple Slices

23 Chicken Bites w/ Corn Muffin
Sweet Potato Wedges
Texas Ranchero Beans
Pineapple Cup

24 Beef Hotdog or Beefaroni w/ garlic Knot
Steamed Spinach
Maple Brown Sugar
Carrots
Mixed Fruit Cup

27 Pizza Crunchers
Marinara Sauce
Carroteenies
Sliced Peaches

28 BBQ Pulled Chicken Sandwich or Corn Dog
Baked Sweet Potato
Spinach Side Salad
Hot Apple Slices

29 Breakfast for Lunch Chicken Sausage w/ French Toast Sticks
Tater Triangles
Zucchini and Yellow Squash Medley
Froot Joice

30 Cheeseburger or Bacon Cheeseburger
Crinkle Cut French Fries
BBQ Baked Beans
Chilled Pears

WHOLE FRESH FRUIT OFFERED DAILY

ANNOUNCEMENTS

Daily:

**PB&J Sandwich w/ Goldfish & Cheese Stick
Cheese Sandwich
Fruit Salad w/ Pretzel**

**Monday, Wednesday, Friday:
Chicken Caesar Salad w/ Pretzel
Eagle Lunchable**

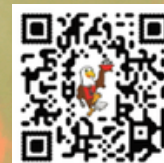
**Tuesday and Thursday:
Turkey & Cheese Sub or Sandwich
Fruit Parfait w/ Granola & Goldfish**

CHOICE OF FAT FREE FLAVORED, 1% WHITE & SKIM MILK DAILY

MEAL PRICES

**Student Lunch: \$1.50
Student Extra Entrée: \$2.00
Various Snacks: \$1.25+
Adult Lunch: \$5.25
Adult Lunch Entrée Only: \$3.50**

This institution is an equal opportunity provider



MENU SUBJECT TO CHANGE

High School APRIL 2026

Breakfast Menu

Health-e Pro 

MON

TUE

WED

THU

FRI

Menus are available online at:

<http://www.smyrna.k12.de.us>

"The Smyrna School District is an equal opportunity employer and does not discriminate against employees, applicants, visitors, or others, and does not deny access to educational or other services, based on any characteristic prohibited by law." Federal Nondiscrimination Statement on reverse side.

1
Bagel w/ Cream Cheese
100% Fruit Juice
Whole Fresh Fruit
Choice of Milk

2
Pancakes w/ Sausage
100% Fruit Juice
Whole Fresh/ Asst.
Dried Fruit
Choice of Milk



7
Spring



9
BREAK

10

13
Trix Muffin
100% Fruit Juice
Whole Fresh Fruit
Choice of Milk

14
Breakfast Bagel Sandwiches
100% Fruit Juice
Whole Fresh/Asst. Fruit
Choice of Milk

15
Dutch Waffle
100% Fruit Juice
Whole Fresh Fruit
Choice of Milk

16
Apple or Cinnamon Turnover w/ Sausage Patty
100% Fruit Juice
Whole Fresh/ Asst.
Fruit
Choice of Milk

17
Professional Learning Day
School Closed



20
Breakfast Bowl
100% Fruit Juice
Whole Fresh Fruit
Choice of Milk

21
Ultra Bread
100% Fruit Juice
Whole Fresh/Asst. Fruit
Choice of Milk

22
Assorted Muffins
100% Fruit Juice
Whole Fresh Fruit
Choice of Milk

23
French Toast Sticks
100% Fruit Juice
Whole Fresh/Asst.
Fruit
Choice of Milk

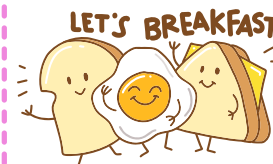
24
Sunrise Stick
100% Fruit Juice
Whole Fresh Fruit
Choice of Milk

27
Apple Bites
100% Fruit Juice
Whole Fresh Fruit
Choice of Milk

28
Sausage & Cheese Stuffed Waffle w/ Tater Tots
100% Fruit Juice
Whole Fresh/Asst. Dried Fruit
Choice of Milk

29
Donuts
100% Fruit Juice
Whole Fresh Fruit
Choice of Milk

30
Pancake Sandwich
100% Fruit Juice
Whole Fresh/Asst.
Dried Fruit
Choice of Milk



ANNOUNCEMENTS

Daily:
2 Ounce Cereal
NutriGrain Bar w/ Graham Cracker
Double Pack PopTart

Monday and Friday:
Munchable Cup

Wednesday:
Apple Nachos

Tuesday and Thursday:
Smoothie w/ Graham Cracker

MEAL PRICES

Student Breakfast: FREE
Student Extra Entrée: \$1.00
Adult Breakfast: \$3.50
Adult Breakfast Entrée Only: \$2.00

This institution is an equal opportunity provider



MENU SUBJECT TO CHANGE

High School APRIL 2026 Grab & Go

Breakfast Menu

Health-e Pro 

MON	TUE	WED	THU	FRI
<p>Menus are available online at: http://www.smyrna.k12.de.us.</p> <p>"The Smyrna School District is an equal opportunity employer and does not discriminate against employees, applicants, visitors, or others, and does not deny access to educational or other services, based on any characteristic prohibited by law." Federal Nondiscrimination Statement on reverse side.</p>				
		1 Nutri Grain Bar w/ Graham Cracker 100% Fruit Juice Whole Fresh Fruit Choice of Milk	2 Donut Sticks 100% Fruit Juice Assorted Dried Fruit Choice of Milk	3 
<p>6  7  8  9  10</p>				
13 Pull-Apart Donut 100% Fruit Juice Whole Fresh Fruit Choice of Milk	14 PopTart 100% Fruit Juice Assorted Dried Fruit Choice of Milk	15 Crumb Cake 100% Fruit Juice Whole Fresh Fruit Choice of Milk	16 Ultra Bread 100% Fruit Juice Assorted Dried Fruit Choice of Milk	17 Professional Learning Day School Closed 
20 Ultra Bread 100% Fruit Juice Whole Fresh Fruit Choice of Milk	21 Apple Bites 100% Fruit Juice Assorted Dried Fruit Choice of Milk	22 Donut Holes 100% Fruit Juice Whole Fresh Fruit Choice of Milk	23 Assorted Muffins 100% Fruit Juice Assorted Dried Fruit Choice of Milk	24 Mini Cinnis 100% Fruit Juice Whole Fresh Fruit Choice of Milk
27 PopTart 100% Fruit Juice Whole Fresh Fruit Choice of Milk	28 Breakfast Bun 100% Fruit Juice Assorted Dried Fruit Choice of Milk	29 Bagelful 100% Fruit Juice Whole Fresh Fruit Choice of Milk	30 Mini Loaf w/ Graham Crackers 100% Fruit Juice Assorted Dried Fruit Choice of Milk	

ANNOUNCEMENTS

FREE

GRAB & GO AVAILABLE IN SMYRNA SIDE ENTRANCE OF THE SCHOOL



MEAL PRICES

Student Breakfast: FREE
Student Extra Entrée: \$1.00
Adult Breakfast: \$3.50
Adult Breakfast Entrée Only: \$2.00

This institution is an equal opportunity provider



MENU SUBJECT TO CHANGE

High School APRIL 2026

Lunch Menu

Health-e-Pro 

MON

TUE

WED

THU

FRI

Menus are available online at:

<http://www.smyrna.k12.de.us>.

"The Smyrna School District is an equal opportunity employer and does not discriminate against employees, applicants, visitors, or others, and does not deny access to educational or other services, based on any characteristic prohibited by law." Federal Nondiscrimination Statement on reverse side.

1 **Spicy Honey, Mango Habanero, or Plain Boneless Wings w/ Biscuit**
Mac & Cheese
Seasoned Corn
Celery Sticks w/ Dip
Carroteenies
Sliced Pears

2 **Beef & Cheese Nachos**
Baked Potato
Buffalo Cauliflower
Salsa Cup
Sidekick



6 **13 Chipotle Chicken Sandwich**
or
Cheesesteak Melt
Crinkle Cut French Fries
Vegetable Juice
Sliced Peaches

7 **14 Walking Taco or Burrito Bowl**
Seasoned Black Beans
Fiesta Corn
Salsa Cup
Pineapple Cup

8 **15 French Bread Pizza**
Vegetable Soup
Potato Wedges
Seasoned Green Beans
Sidekick

9 **16 Mandarin Orange chicken w/ Rice & Egg Roll or Chicken & Vegetable Dumplings w/ Rice & Egg Roll**
Steamed Broccoli
Orange Glazed Carrots
Mandarin Orange Cup

10 **17 Professional Learning Day**
School Closed



20 **20 Chicken Tenders w/ Pancakes**
Red Pepper Slices
Pepperoni Potato Bake
Apple Slices

21 **21 Cheese Quesadilla w/ Hush Puppies or Fish Fillet Sandwich w/ Hush Puppies**
Texas Ranchero beans
Sweet Potato Wedges
Sliced Pears

22 **22 Pizza Palooza Homemade Pizza**
Pizza Style Green Beans
Cucumber Cup
Orange Slices

23 **23 Chicken Bites w/ Macaroni Salad**
Seasoned Mixed Vegetables
Caesar Side Salad
Applesauce cup

24 **24 Beef Hot Dog or Baked Ziti w/ Garlic Knot**
Maple Brown Sugar Carrots
Steamed Spinach
Mixed Fruit Cup

27 **27 Pizza Crunchers**
Marinara Sauce
Crinkle Cut French Fries
Seasoned Broccoli
Sliced Peaches

28 **28 BBQ Pulled Chicken Sandwich or Corn Dog**
BBQ Baked Beans
Seasoned Carrots
Cucumber Cup
Apple Slices

29 **29 Breakfast For Lunch Chicken Sausage w/ Pancakes**
Tater Triangles
Baked Sweet Potatoes
Froot Jooc

30 **30 Chicken Tenders w/ Garlic Bread**
Seasoned mashed Potatoes w/ Gravy
Mixed Vegetables
Frozen Strawberry cup

WHOLE FRESH FRUIT OFFERED DAILY

ANNOUNCEMENTS

Daily:

**PB&J Sandwich
Assorted Wraps
Fruit Salad w/ Breadstick**

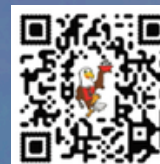
Monday, Wednesday and Friday
**Chicken Caesar Salad w/ Breadstick
Hummus Platter
EAGLE LUNCHABLES
(Cheese/Pepperoni/BBQ Chicken Pizza)**

Tuesday and Thursday:
**Buffalo Chicken Salad w/ Breadstick
Fruit Parfait w/
Granola & Breadstick
Turkey & Cheese Sub**

MEAL PRICES

**Student Lunch: \$1.50
Student Extra Entrée: \$2.00
Various Snacks: \$1.25+
Adult Lunch: \$5.25
Adult Lunch Entrée Only: \$3.50**

This institution is an equal opportunity provider



MENU SUBJECT TO CHANGE

In accordance with federal civil rights law and USDA civil rights regulations and policies, the USDA, its agencies, offices, employees, and institutions participating in or administering USDA programs are prohibited from discriminating based on race, color, national origin, religion, sex, disability, age, marital status, family/parental status, income derived from a public assistance program, political beliefs, or reprisal or retaliation for prior civil rights activity, in any program or activity conducted or funded by USDA (not all bases apply to all programs). Remedies and complaint filing deadlines vary by program or incident.

Persons with disabilities who require alternative means of communication for program information (e.g., Braille, large print, audiotope, American Sign Language, etc.) should contact the state or local agency that administers the program or contact USDA through the Telecommunications Relay Service at 711 (voice and TTY). Additionally, program information may be made available in languages other than English.

To file a program discrimination complaint, complete the USDA Program Discrimination Complaint Form, [AD-3027](#), found online at How to File a Program Discrimination Complaint and at any USDA office or write a letter addressed to USDA and provide in the letter all of the information requested in the form. To request a copy of the complaint form, call (866) 632-9992. Submit your completed form or letter to USDA by:

1. **Mail:** U.S. Department of Agriculture, Office of the Assistant Secretary for Civil Rights, 1400 Independence Avenue, SW, Mail Stop 9410, Washington, D.C. 20250-9410; or
1. **Fax:** (202) 690-7442; or
2. **Email:** program.intake@usda.gov.

This institution is an equal opportunity provider, employer, and lender.